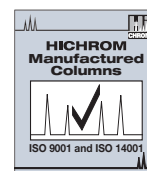


# HICHROM CHIRAL COLUMNS



- Chiral 'Pirkle-type'
- Unique covalent bonding
- Enantiomer order elution inversion
- Competitively priced
- Hichrom high efficiency

Hichrom manufactures two ranges of 'Pirkle-type' columns for the analysis of a wide range of enantiomers of pharmaceutical or agrochemical origin. CHIRA-chrom-1 type columns contain a stationary phase in which the hydroxyl groups on the silica surface have been modified by a nitrobenzoyl derivative of an optically active amino acid. In the CHIRA-chrom-2 type columns a chiral dinitrophenyltartramide moiety is bonded to the silica surface through a propyl spacer group.

## Pirkle Chiral Phases

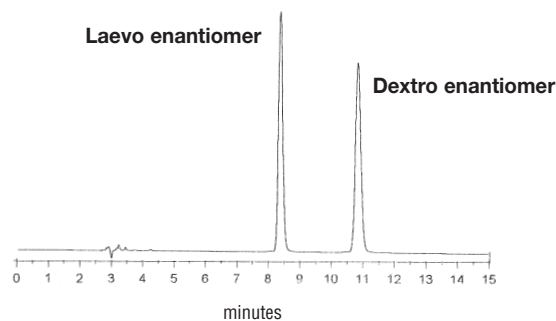
Phase	Type	Endcapped	Particle Size (µm)
D-Phenylglycine	CHIRA-chrom-1	No	5
L-Phenylglycine	CHIRA-chrom-1	No	5
DL-Phenylglycine	CHIRA-chrom-1	No	5
L-Leucine	CHIRA-chrom-1	No	5
Dinitrophenyltartramide	CHIRA-chrom-2	No	5

## Enantiomer k' Inversion

By substituting L-phenylglycine for D-phenylglycine, the order of elution of the chiral peaks can be reversed. Such a procedure can be useful in assigning peak identity or ensuring prior elution of the minor enantiomer, thus allowing its more accurate determination. The availability of the D,L-phenylglycine further aids peak assignment by removing chiral separations whilst maintaining background peak retention profile.

### D-Phenylglycine column evaluation

Sample: 2,2,2-Trifluoro-1-(9-anthryl)ethanol



Eluent: Hexane - CH<sub>2</sub>Cl<sub>2</sub> - IPA (92:8:5)  
Flow rate: 1 ml/min  
Temperature: Ambient

## Ordering Information - Hichrom Manufactured Columns

Please contact Hichrom for details of additional column dimensions not listed.

Chiral Phase	Column Dimensions (mm)			Guard Cartridge <sup>1</sup>	Guard Cartridge <sup>3</sup>
	250 x 3.2	250 x 4.6	250 x 7.75	(For 3.2-4.6mm i.d. Columns)	(For 7.75mm i.d. Columns)
D-Phenylglycine	CHI-D-PGC-250AS £426	CHI-D-PGC-250A £426	CHI-D-PGC-250SP £645	CHI-D-PGC-10C £99 (5/pk) <sup>2</sup>	CHI-D-PGC-10CP £40 (1/pk) <sup>4</sup>
L-Phenylglycine	CHI-L-PGC-250AS £481	CHI-L-PGC-250A £481	CHI-L-PGC-250SP £865	CHI-L-PGC-10C £99 (5/pk) <sup>2</sup>	CHI-L-PGC-10CP £40 (1/pk) <sup>4</sup>
DL-Phenylglycine	CHI-DL-PGC-250AS £451	CHI-DL-PGC-250A £451	CHI-DL-PGC-250SP £755	CHI-DL-PGC-10C £99 (5/pk) <sup>2</sup>	CHI-DL-PGC-10CP £40 (1/pk) <sup>4</sup>
L-Leucine	CHI-L-LEUC-250AS £426	CHI-L-LEUC-250A £426	CHI-L-LEUC-250SP £645	CHI-L-LEUC-10C £99 (5/pk) <sup>2</sup>	CHI-L-LEUC-10CP £40 (1/pk) <sup>4</sup>
Phenyltartramide	CHI-TA-250AS £426	CHI-TA-250A £426	CHI-TA-250SP £645	CHI-TA-10C £99 (5/pk) <sup>2</sup>	CHI-TA-10CP £40 (1/pk) <sup>4</sup>

<sup>1</sup> Use with free-standing holder HI-161 (£45) and column coupler HI-081 (£15) - see p.23

<sup>2</sup> 1/pk (£32), 3/pk (£75), 10/pk (£182) and starter kits (£75) also available - see p.24

<sup>3</sup> Use with free-standing holder HI-150 (£100) and column coupler HI-081 (£15)

<sup>4</sup> 1/pk, 3/pk (£102) also available - see p.24